



Alpaca Consulting Services USA

Ian Watt
805 772 1774

info@alpacaconsultingusa.com

1540 San Bernardo Creek Road, Morro Bay California 93442

Skin Biopsy Report

The ORIGINAL 100% Alpaca Density Test™

Date of test: 23 January 2010

Alpaca Name: Lady Joselyn

Owner name and address: Powers Alpacas
Wellington CO

Alpaca breed: Huacaya

Alpaca age: 27 months

Alpaca color: White

Alpaca sex: Female

Data details:

Density: 42.3 /mm²

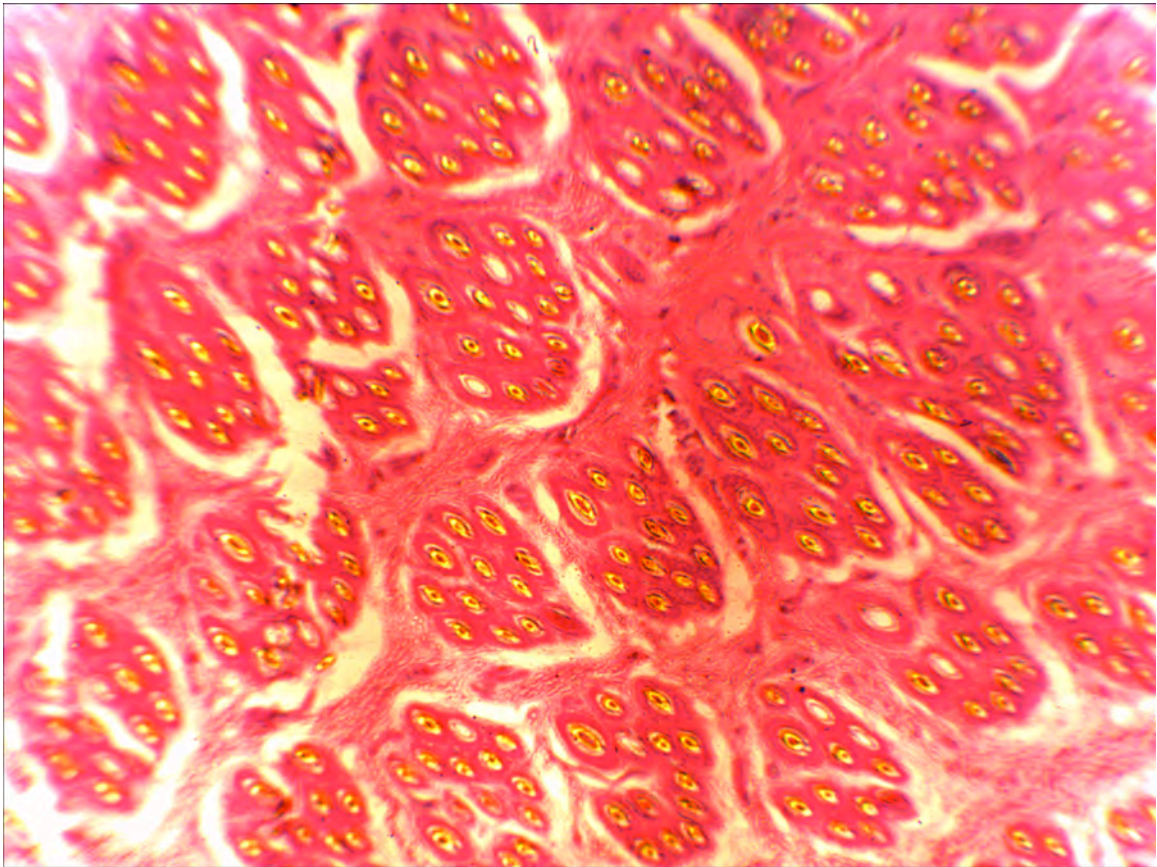
Secondary:Primary fiber ratio: 11.0 :1

In-skin mean primary fiber diameter: 23.3μ Standard Deviation: 2.9 μ Range: 18.6 μ to 29.4 μ

In-skin mean secondary fiber diameter: 15.8 μ Standard Deviation: 2.8μ Range: 9.7 μ to 25.6μ

Average Daily Fleece Growth: see OFDA 2000 report supplied separately

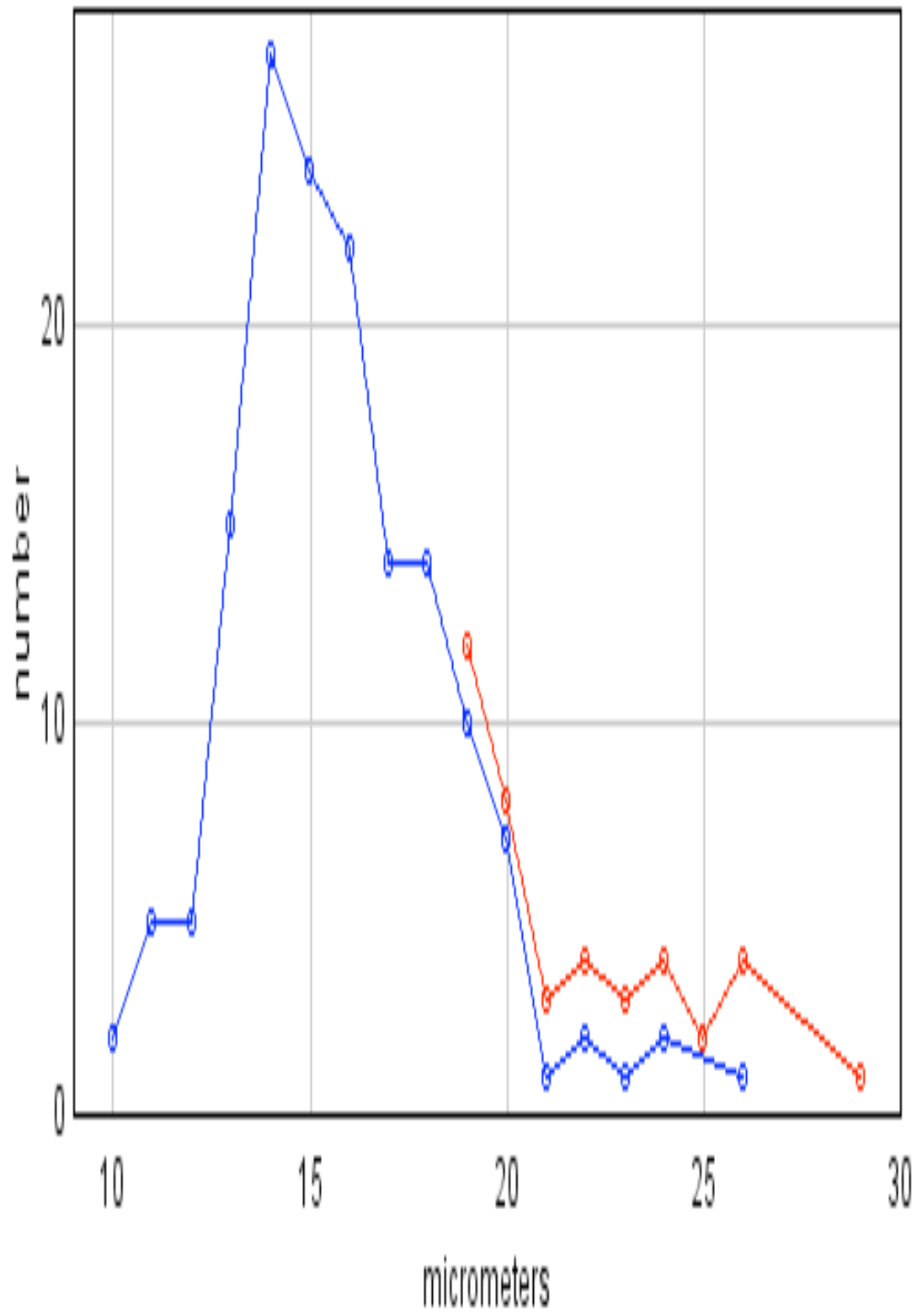
Sample biopsy photograph:



Fiber population histogram:

blue: secondaries

red: primaries



Comments:

This is an above average female exhibiting excellent fleece traits supported by a good density and secondary to primary fiber ratio.

The fiber population differential is very good as exhibited by the low micron counts and very good standard deviation figures.

Careful male genetic selection to cover this female should deliver quality genetics either for sale or as the foundation line for an elite herd of alpacas.

The results of this test are from a minimum 500 follicle count of a biopsy provided by the owner and processed by a national histology laboratory operating in California, USA, read through both a specifically adapted imaging program and laboratory operator, with the data moderated to account for shrinkage in the processing of the biopsy.